

Education System for FEI Dressage Judges

Update: 04.08.2010

In effect as of 1 July 2010

1. Preliminary Remarks

1.1 Terminology and Abbreviations

- **5* Judges Seminars**
To be defined
- **Class**
Equivalent term to competition
- **Competition**
Equivalent term to class
- **Course Director (CD)**
CDs are responsible to deliver FEI Qualification Courses and Refresher Seminars.
The group of CDs is also responsible for updating the existing FEI education material.
- **Dressage Committee (DC)**
- **Event**
A Dressage only event.
- **Foreign Judge (FJ)**
Member of Ground Jury
- **Freestyle (FS)**
- **Grand Prix (GP)**
- **Grand Prix Special (GPS)**
- **Grand Prix Free Style (GPFS)**
- **FEI Headquarters (HQ)**
- **International judges are divided into four categories:**
2* Judges (new)
3* Judges (former International Candidate Judges).
4* Judges (former International Judges).
5* Judges (former Official International Judges).
- **Intermediate level I or II (Int. I or Int. II)**
- **Judges Supervisory Panel (JSP)**
To be defined.
- **Mentor Judge (MJ)**
An FEI trained, appointed and approved judge who supervises and assesses judges during Sit-ins and Shadow Judgings. He must be from a country other than the judge.
The list of MJs is published on the FEI website.
- **Qualification Course (QC)**
A 4 day course with exam to obtain the FEI qualification as 2*, 3* or 4* judge.

(3 day course for 2* judges) On special request to the FEI the participation in a QC without taking the exam counts as participation in a RS.

- **Prix St. George (PSG)**
- **Refresher Seminar (RS)**
A seminar without exam for the purpose of educating and updating actual FEI judges. RS will also be open to national judges in addition to the invited FEI Judges, provided the maximum number of available spaces is not exceeded. The applications of international judges have priority.
- **Shadow Judging (SJ)**
Shadow-Judging (SJ) is a procedure required for (re-)qualification courses. An judge who judges a competition at a CDI separately from the officiating judges' panel without his results being counted for the ranking of the class. One, preferably two, FEI approved MJs will assess the outcome and discuss the results. (See Guidelines for Shadow Judging).
- **Show**
A multidiscipline event.
- **Sit-In**
A candidate sits at a CDI together with an FEI approved officiating MJ to improve his judging. (See Guidelines for Sit-In).

1.2 Education Strategy

The number of 2*, 3*, 4* and 5* Judges for different regions and countries will be dependent on

- the number of international events
- the number of international athletes
- the number of qualified candidates
- the role of an individual on national level

The FEI will provide statistics on the actual balance between the number of international events and the number of FEI Judges per NF, FEI Groups and world-wide. A corresponding analysis will determine areas of various needs and the education strategy to be applied.

1.3 Nomination Process

A judge who passed the examinations during a qualification course can act as Judge on that particular level after the official promotion dates (1st January and 1st July). Corresponding certificates will be awarded during the closing ceremonies of the qualification course.

1.4 Judges Review

The Judges Supervisory Panel evaluates all FEI listed judges at least biannually. A report will be submitted to HQ.

1.5 Information Resources on Quality of Judging

The following resources will be used for an evaluation of the quality of judging:

1. The Judges Supervisory Panel
2. The Foreign Judges Report(s)
3. Consistency Statistics
4. Informal Resources

These resources will be compiled and analysed within HQ also consulting the Dressage Committee.

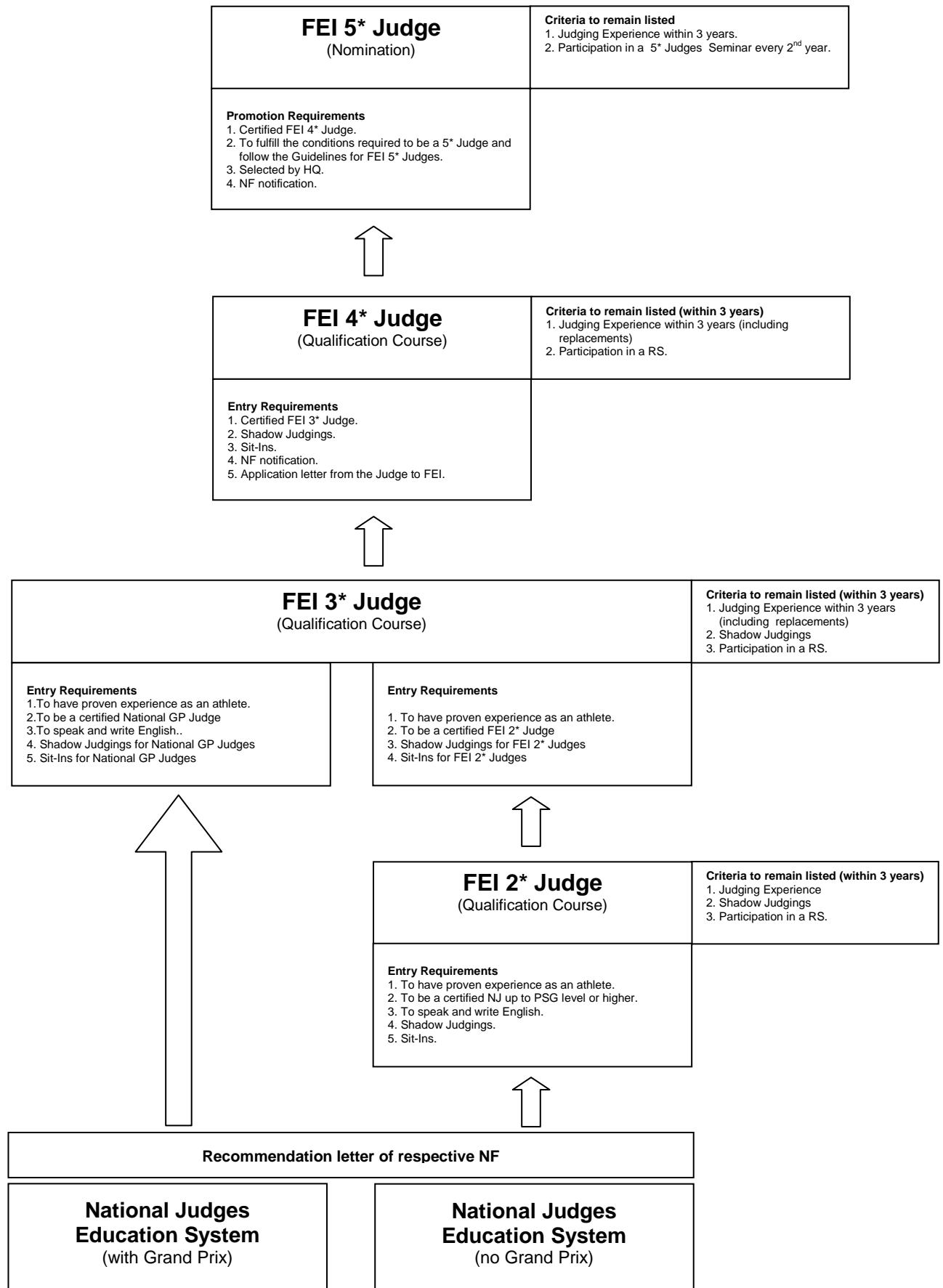
1.6 Codex

To be signed by all FEI Judges.

1.7 National Education

Will be continued as separate project.

2. Education System for FEI Dressage Judges (Diagram)



3. Description of the Education System for FEI Dressage Judges

2* Judge

2* Dressage Judges Qualification Course

Entry Requirements

- | | |
|---|--|
| 1. Recommendation letter of respective NF | Letter to be provided before application to either first SJ or first Sit-In. |
| 2. National Dressage Level | Home country of the judge has no GP classes. |
| 3. To have proven experience as an athlete | Up to at least PSG Level. Proofs are provided either through result lists or confirmed by the NF.

Exceptions possible which have to be considered by the FEI (DC, HQ, JSP). In these cases compensation by:
2 more Sit-Ins and 2 more SJ with an evaluation by FEI approved MJs graded "good" or better. |
| 4. To be a certified National judge up to PSG level or higher | To have judged a minimum of 9 national competitions (PSG level or higher) in the last three years prior to the application (proven by official results or NF written confirmation). Minimum 3 in the last 12 months before the application. |
| 5. To speak and write English | Written confirmation by the NF and assessment of MJs during Sit-Ins and SJ. |
| 6. Recommendation of respective NF | By letter |
| 7. Shadow Judging | 1 SJ (PSG/ Int. 1, minimum 8 horses) with 1 positive recommendation of the MJ. One of the two MJs per SJ preferably to be a 5* judge.

SJ and Sit-Ins may be done at the same event but the SJ must be done before the Sit-In. |
| 8. Sit-Ins | 3 Sit-Ins (PSG/ Int. 1) with at least 2 out of 3 positive recommendations of different MJs . At least 3 different CDIs. |

2* Dressage Judges Qualification Course

Course Organisation

Number of days	3
Number of Course Directors	2
Minimum number of participants	8
Maximum number of participants for exams	12
Debriefing	Average 10 minutes per participant.
Course Material	(To be completed) <ul style="list-style-type: none">- FEI Dressage Rules (incl. Freestyle Guidelines and Guidelines for Young Horses)- FEI Code of Conduct- FEI General Regulations
CD Notes	To be decided

2* Dressage Judges Qualification Course

Course Examination

Practical Examination	Judging of a PSG-level competition with minimum 10 horses.
Written Examination	60-minute closed-book examination in English. Questions on <ul style="list-style-type: none">- Basic paces,- Scale of Training,- Movements up to Int. I,- Principles in judging Dressage,- Dressage Rules,- Freestyle competitions. Description of photos of movements.
Oral Examination	Questions based on <ul style="list-style-type: none">- Practical judging in examination (Unit 16): Rankings, spread, marks and remarks- Riding principles- Dressage Rules- Judging of freestyle competitions. Exam duration approx. 20 min.
Marking Criteria	To be decided
Final Evaluation	To be decided

2* Dressage Judges

Criteria to remain listed (Proof of activity within 3 years)

1. Minimum of 12 classes out of which minimum of 3 classes have to be at CDI 1* CDI-Y (PSG / Int. I) at a minimum of 2 CDI 1* shows.
2. Participation in a RS.
3. Course with examination only when needed.

3* Judge

3* Dressage Judges Qualification Course

Entry requirements for FEI 2* Judges

1. Letter of recommendation from NF
Letter to be provided before application to either first SJ or first Sit-In.
2. To have proven experience as an athlete
Up to at least PSG Level. Proofs are provided either through result lists or confirmed by the NF.

Exceptions possible which have to be considered by the FEI (DC, HQ, JSP). In these cases compensation by:
2 more Sit-Ins and 2 more SJ with an evaluation by FEI approved MJs graded "good" or better.
3. To be a certified FEI 2* Judge
For at least 2 years and to have judged a minimum of 6 national shows or CDI*/** with at least 12 classes PSG and higher; the national classes can be judged up to GP level, the CDI*/** up to Int.I level.
4. To speak and write English
Written confirmation by the NF and assessment by FEI approved MJs during Sit-Ins and SJ.
5. Shadow Judging
3 SJ (GP, minimum 8 horses) with 3 positive recommendations of **different** FEI approved MJs. One of the MJs per SJ preferably to be a 5* judge.

SJ and Sit-Ins must be conducted at a minimum of 3 CDIs. Two of them should be a CDI3* or above.

SJ and Sit-Ins may be done at the same CDI but the SJ must be done before the Sit-In.
6. Sit-Ins
9 Sit-Ins at min. 3 CDIs (Int. II, minimum 3 GP/GPS, minimum 3 GPFS) with at least 6 out of 9 positive recommendations of **4 different** FEI approved MJs.

3* Judge

3* Dressage Judges Qualification Course

Entry requirements for National Grand Prix Judges

1. Letter of recommendation from NF
Letter to be provided before application to either first SJ or first Sit-In.
2. To have proven experience as an athlete
Up to at least PSG Level, preferably GP. Proofs are provided either through results lists or confirmed by the NF.

Exceptions possible which have to be considered by the FEI (DC, HQ, JSP). In these cases compensation by:
2 more Sit-Ins and 2 more SJ with an evaluation by the FEI approved MJs graded "good" or better.
3. To be a certified National GP judge
For at least 2 years and to have judged a minimum of 9 national GP Level competitions in the last three years prior to the application (proven by official results or NF written confirmation).
Minimum 3 competitions in the last 12 months before application and exam.
4. To speak and write English
Written confirmation by the NF and assessment by FEI approved MJs during Sit-Ins and SJ.
5. Shadow Judging
2 SJ (GP, minimum 8 horses) with 2 positive recommendations of **different** FEI approved MJs. One of the MJs per SJ preferably to be a 5* judge.

SJ and Sit-Ins must be conducted at a minimum of 2 CDIs. One of them should be a CDI3* or above.

SJ and Sit-Ins may be done at the same event but the SJ must be done before the Sit-Ins.
6. Sit-Ins
3 Sit-Ins (Int. II, minimum 1 GP/GPS, minimum 1 GPFS) with at least 2 out of 3 positive recommendations of **different** FEI approved MJs.

3* Dressage Judges Qualification Course

Course Organisation

Number of days	4
Number of Course Directors	2
Minimum number of participants	8
Maximum number of participants for exams	12
Maximum number of participants as observers or for maintenance of status	8
Debriefing	Average 10 minutes per participant.
Course Material	(To be completed) <ul style="list-style-type: none">- FEI Dressage Rules (incl. Freestyle Guidelines and Guidelines for Young Horses)- FEI Code of Conduct- FEI General Regulations
CD Notes	To be developed.

3* Dressage Judges Qualification Course

Course Examination

Practical Examination	Judging of GP competition with minimum 10 horses.
Written Examination	Format and size to be decided.
Oral Examination	Questions on <ul style="list-style-type: none">- The practical judging- Knowledge of the principles of riding / judging- FEI Dressage- and Freestyle Rules. Exam duration, to be decided. Number of questions, to be decided.
Marking Criteria	To be developed.
Final Evaluation	To be developed.

3* Judge

Criteria to remain listed (Proof of activity within 3 years)

1. Minimum 12 competitions (except Young Horses competitions) at a minimum of 4 CDI2* and/or above. 6 of the competitions judged must be Int. II and/or higher.
2. Maximum 3 competitions Int. II or higher and/or maximum 3 competitions on lower level can be replaced by either 1 positive SJ (per competition to be judged) or the participation in a RS (per competition to be judged).
A minimum of 3 CDI 2* and/or above have to be judged.
3. MJs for the SJ, one of them being a 5* judge, are to be approved by HQ.
4. Participation in a RS.
5. Course with examination only when needed (taking into account assessment of DC, HQ, JSP and Consistency Statistics).

4* Judge

4* Dressage Judges Qualification Course

Entry requirements

1. NF notification
NF will be notified on the invitation and has the possibility to object. HQ will consider the reasons for objection.
2. Certified FEI 3* Judge
For at least 2 years and have judged a minimum of 8 CDI2* and/or above including 12 GP level competitions.
3. Shadow Judging
2 SJ (GP, minimum 8 horses) with 2 positive recommendations of **different** FEI approved MJs at 2 different CDI 2* and/or above. One of the MJs per SJ preferably to be a 5* judge.

SJ and Sit-Ins must be conducted at a minimum of 2 CDIs. One of them should be a CDI3* or above.

SJ and Sit-In may be done at the same event but the SJ must be done before the Sit-In.
4. Sit-Ins
2 Sit-Ins (GP/ GPS/ GPF) with 2 positive recommendations of **different** FEI approved MJs (preferably 5* judges)
5. Application letter from the judge to FEI
The judge has to formally apply to HQ for invitation to a 4* Judges QC, specifying within the application all necessary requirements.

4* Judges Qualification Course

Course Organisation

Number of days	4
Number of Course Directors	2
Minimum number of participants	8
Maximum number of participants for exams	12
Debriefing	Average 10 minutes per participant.
Course Material	(To be completed) <ul style="list-style-type: none">- FEI Dressage Rules (incl. Freestyle Guidelines and Guidelines for Young Horses)- FEI Code of Conduct- FEI General Regulations
CD Notes	To be developed.

4* Judges Qualification Course

Course Examination

Practical Examination	Judging of GP competitions with minimum 10 horses.
Written Examination	60-minute closed-book examination in English. Questions to Dressage Rules, Scale of Training, Basic Paces, Movements up to GP, Principles in Judging Dressage and Freestyle. Description of photos of movements.
Oral Examination	Questions on <ul style="list-style-type: none">- The outcome of the practical judging (ranking, spread, marks, remarks)- The outcome of the written exam- The principles of riding / judging- FEI Dressage- and Freestyle Rules. Exam duration approx. 20 min.
Marking Criteria	To be developed.
Final Evaluation	To be developed.

4* Judge

Criteria to remain listed (Proof of activity within 3 years)

1. Minimum 12 Int. II and/or higher competitions at a minimum of 8 CDI2* and/or above.
2. Maximum of 3 competitions can be replaced by either 1 positive SJ (per competition to be judged) or the participation in a RS (per competition to be judged).
A minimum of 6 CDI 2* and/or above have to be judged.
3. MJs for the SJ, one of them being a 5* judge, are to be approved by HQ.
4. Participation in a RS.
5. Course with re-examination only when needed (taking into account assessment of DC, HQ, JSP and Consistency Statistics average of minimum 3 years).

5* Judge

Promotion requirements

- | | |
|---|---|
| 1. Certified FEI 4* Judge | For at least 3 years and have judged a minimum of 15 CDI3* and/or above including 30 GP level competitions. |
| 2. To fulfil the conditions required to be a 5* Judge and follow the Guidelines for FEI 5* Judges | High quality of judging and high ethical standards. Able to give clinics, willing to develop the sport further, willing and be able to act as Foreign Judge, taking over more responsibility. |
| 3. Selected by HQ | HQ proactively selects from the list of 4* Judges based on competence, knowledge, experience and appearance and after hearing and considering the opinion of the DC and JSP. |
| 4. NF notification | NF will be notified on the invitation and has the possibility to object. HQ will consider the reasons for objection. |

5* Judge

Criteria to remain listed

1. Within three years minimum 12 GP level competitions at a minimum of 8 CDI3* and/or above.
2. Attendance in 5* Judges Seminars every 2nd.
3. Available for further development of the education system.
4. Course with re-examination for 5* Judges only when needed (taking into account assessment of DC, HQ, JSP and Consistency Statistics).

4. Failure of Exams

If a judge fails an exam within a qualification course for 4* Judges for the first time, he can:

- re-do the exam within a period of 2 years.
- do 3 additional Sit-Ins (GP/ GPS/ GPF) with 2 positive recommendations of different FEI approved MJs (preferably 5* judges)

2 additional SJ with an evaluation by FEI approved MJs graded “good” or better. One of the MJs preferably to be a 5* judge.
- The judge remains at 3* level

If a second failure occurs, the judge will be taken off the FEI list of judges.

After 2 years the judge can try again by starting to fulfil the entry requirements for 3* Judges.

5. Removal from and return to list

A judge can be taken off the FEI list for the following reasons, controlled by HQ:

1. Inactivity or not fulfilling the requirements (considered by HQ on a case-by-case basis).
To get back on the list, 1 RS and 1 SJ with recommendation by CDs.
2. Poor quality of judging (see Information Resources on Quality of Judging) may result in being taken off the list for the minimum of 1 year.

The results of the respective judge are assessed by JSP and FJ.

HQ and DC decide upon the measures to be taken.

To get back on the list, it is necessary to fulfil again the conditions of the respective level (Sit-ins, SJ) and exam.

3. Proven to have acted seriously or repeatedly against the guidelines/ Codex, proven biased judging may result in being taken off the list for the minimum of 1 year.

HQ and JSP will decide in a case-by-case evaluation on the individual return conditions.

6. Course Directors

The FEI has to keep a sufficient number of course directors. The list shall be reviewed by HQ every 2nd year to secure the quality of the education. Course Directors will be selected, trained and monitored by HQ. A list of CDs is published on the FEI Website.